

# Tracker Store Documentation

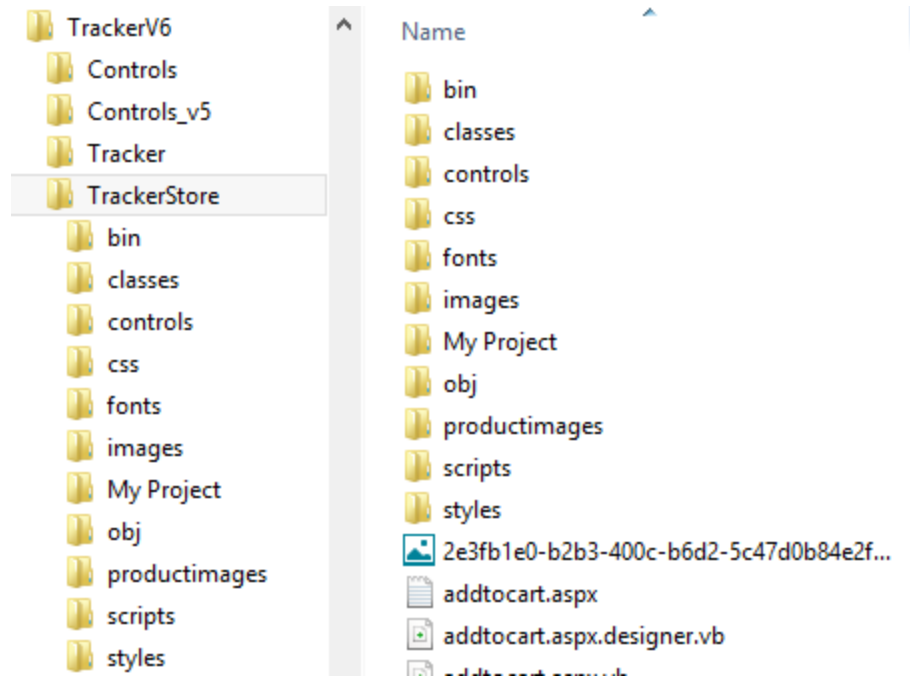
## Table of Contents

Directory Structure.....	2
Deploying the Store .....	3
Editing the web.config File.....	4
Adding Courses and Classes.....	13
TrackerStore_Categories.....	13
TrackerStore_Products.....	13
Viewing Orders.....	15

This document describes the Tracker Store configuration and implementation.

## Directory Structure

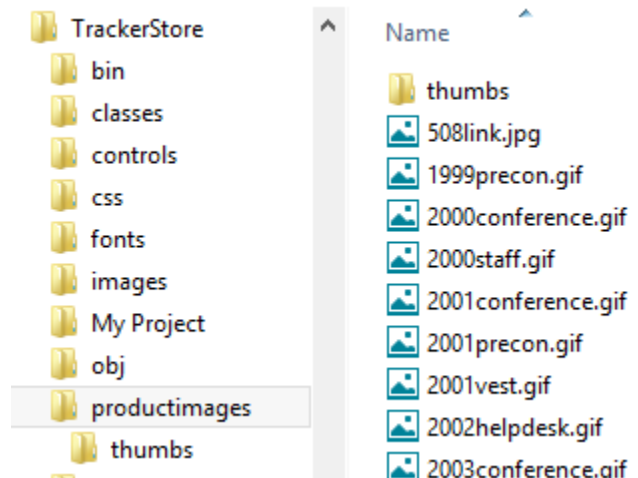
The layout of the Tracker Store directory structure is shown to the right. You would normally copy the entire *TrackerStore* directory structure to your web server and then configure it as described in the next section. This directory would normally be parallel to the Tracker directory itself, but it does not need to be in the same directory or even on the same web server. The *default.aspx* file is the one that is actually started to use the store. The *web.config* file has a number of user-configurable settings as discussed later in this document.



As shown to the right, the *productimages* directory contains image files that match up to each of the courses and classes that you are listing in the store. This directory has larger versions displayed when the user selects a particular class. The *thumbs* subdirectory has thumbnail images of the same name. These are displayed when the user clicks on a category or in response to a search.

The name of the image comes from the *ProductImage* column of the *TrackerStore\_Products* table within the

*Tracker* database as shown below. Again, the thumbnail image in the *thumbs* directory needs to have the same name. We will cover this table in more detail later in this document:

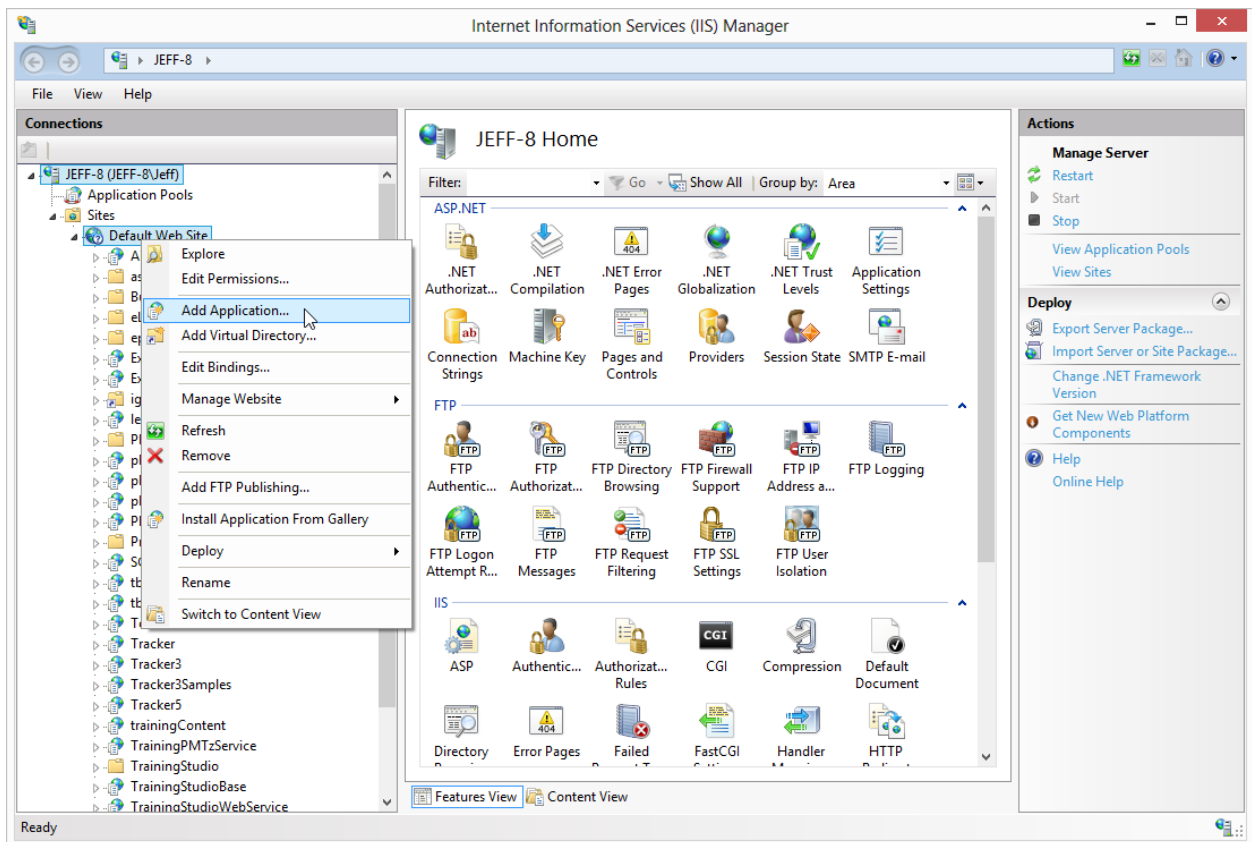


	ProductID	CategoryID	CourseID	ClassID	ModelNumber	ProductImage	UnitCost
▶	1	1	2	NULL	Item 1	bookcover1.jpg	55.0000
	2	2	NULL	1	Item 2	toolbookcomp...	55.0000
	3	3	3	NULL	1-01	2006usbkey.gif	100.0000
*	NULL	NULL	NULL	NULL	NULL	NULL	NULL

The *images* directory contains the various button and other graphics used in the store itself. Feel free to replace these with your own versions. The *css* directory contains two cascading style sheet files that control the fonts and other layout options. Again, feel free to edit these to customize your own look and feel.

## Deploying the Store

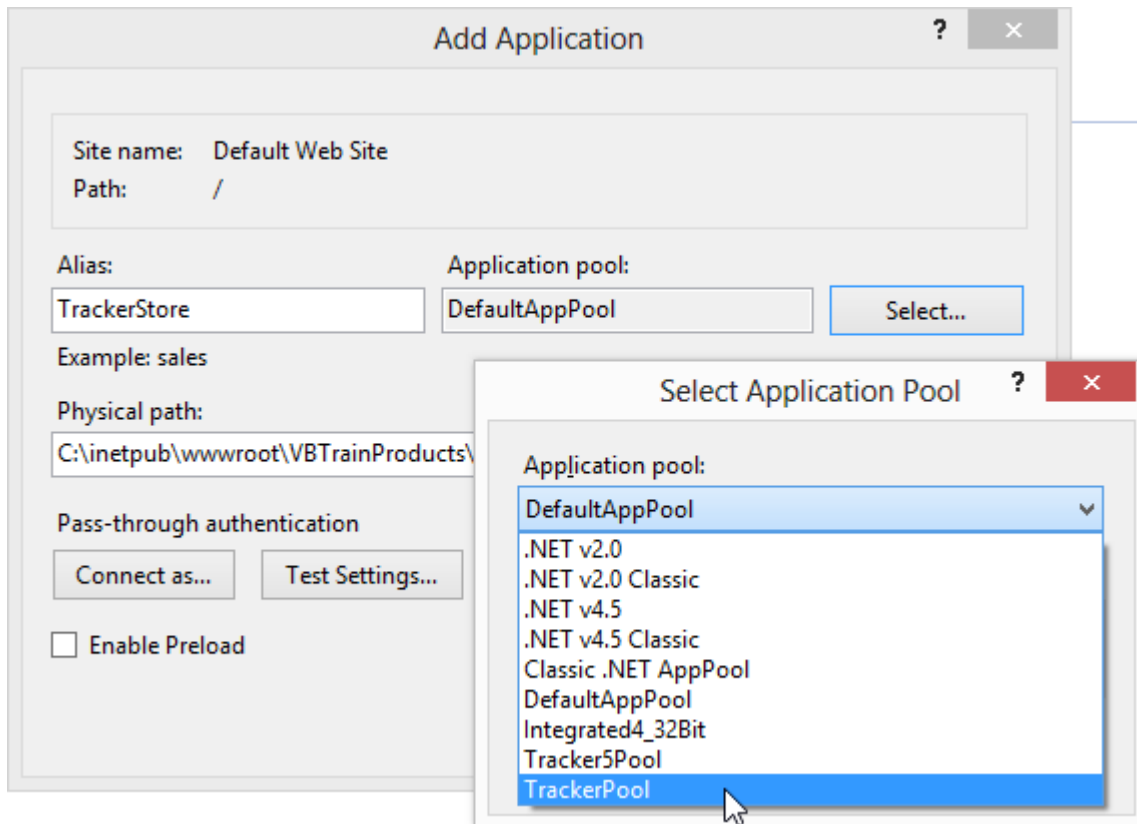
To begin working with the store, you must put its directory structure on the web server and make it into an ASP.NET 4.5 virtual directory/application. This is shown below.



If your local computer has Internet Information Services (IIS) and ASP.NET installed, you can do this locally for testing as well. If you have multiple versions of the .NET runtime on the web server, then you will be able to choose 4.5 for the Application Pool (IIS 7/8) or from the ASP.NET tab (IIS 6).

**Note: If you are running IIS 6 or later, it is critical that you select an application pool that only has ASP.NET 4.0 applications in it.**

Selecting an application pool in IIS 7/8 is shown below.



## Editing the web.config File

The web.config file located in the main directory of the store has a number of user-configurable settings. These are all located in the `<appSettings>` area of the file. Each setting is described below. After editing the web.config (and keeping a backup copy of the original), you can replace the one on your web server.

1. **ConnectionString.** This must match the one in the web.config file of your *Tracker* directory. It contains the connection information for your SQL Server database.

```
<add key="ConnectionString"
value="server=mssql10.yourUrl.net;uid=
plattel_user;pwd=1234;database=DB_plattel" />
```

2. **AddCourseOrClassAssignment.** Setting this value to True shows a “Configure Tracker.Net User” button on the checkout screen. Users can click that button to either validate their user information in Tracker or adding themselves to Tracker. The user is then automatically assigned to purchased courses or classes.

```
<add key="AddCourseOrClassAssignment" value="True"/>
```

3. **AddTrackerNetUserName.** Setting this value to True shows a “Configure Tracker.Net User” button on the checkout screen. Users can click that button to either validate their user information in Tracker or adding themselves to Tracker. If you set *AddCourseOrClassAssignment* to True, then the user is automatically assigned to purchased courses or classes as well.

```
<add key="AddTrackerNetUserName" value="True"/>
```

4. **AllowNewUsersToAddOrganization.** Set this to True to display a box for users to enter their organization on the *configurenewtrackeruser.aspx* page. If this value is set to False, then *DisplayExistingOrganizationsToNewUsers* must be set to True. Otherwise, there will be no way for a user to enter an organization. This page reached from the *configuretrackeruser.aspx* page which is in turn reached from the checkout screen if *AddTrackerNetUserName* is True or *AddCourseOrClassAssignment* is True.

```
<add key="AllowNewUsersToAddOrganization" value="True"/>
```

5. **DisplayExistingOrganizationsToNewUsers.** Set this to True to display a drop-down list of existing organizations for users to select from on the *configurenewtrackeruser.aspx* page. If this value is set to False, then *AllowNewUsersToAddOrganization* must be set to True. Otherwise, there will be no way for a user to enter an organization. This page reached from the *configuretrackeruser.aspx* page which is in turn reached from the checkout screen if *AddTrackerNetUserName* is True or *AddCourseOrClassAssignment* is True.

```
<add key="DisplayExistingOrganizationsToNewUsers" value="True"/>
```

6. **ExtendTerminationDate.** Set this to True to check the student’s termination date and extend it by the number of days in the *ExtendTerminationDateInDays* value if needed. For example, if the student’s current termination date is 12/15/2015, the current date is 12/1/2015, and the *ExtendTerminationDateInDays* is 30, the store will extend the student’s termination date to 1/15/2016. If the student’s current termination date had been 1/31/2016, then the store would not extend the date (since it is more than 30 days away).

```
<add key="ExtendTerminationDate" value="True"/>
```

7. **ExtendTerminationDateInDays.** Set this to a positive number to extend a student’s termination date if needed and if *ExtendTerminationDate* is set to True. For example, if the student’s current termination date is 12/15/2015, the current date is 12/1/2015, *ExtendTerminationDate* is True, and this value is 30, the store will extend the student’s termination date to 1/15/2016. If the student’s current termination date had been 1/31/2016, then the store would not extend the date (since it is more than 30 days away).

```
<add key="ExtendTerminationDateInDays" value="30"/>
```

8. **Message\_CheckOut\_Complete.** This message is displayed to users after they successfully check out of the store. It is included here so that you can edit or localize the message.

```
<add key="Message_CheckOut_Complete" value="Check Out Complete!" />
```

9. **Message\_CheckOut\_CreditCardCleared.** This message is displayed in the credit card number box to avoid the screen being left open with the credit card number displayed. It is included here so that you can edit or localize the message.

```
<add key="Message_CheckOut_CreditCardCleared" value="Credit card information cleared" />
```

10. **Message\_CheckOut\_OrderNumberInfo.** This message is displayed to users summarizing their order. It is included here so that you can edit or localize the message. There are placeholders for variable pieces of information as follows.

Placeholder	Value
{0}	Order ID. This is the numeric database ID of the order.
{1}	Carriage Return (hard return)
{2}	< symbol. This allows you to use HTML tags within the order. For example, {2}b> will end up being the front part of a bold tag: <b>.

```
<add key="Message_CheckOut_OrderNumberInfo" value="{2}b>Your Order Number Is: {0}. We will send you a confirmation email when we process your order. If you have any questions about this order, please contact us at {2}a href='mailto:sales@yourcompany.com'>sales@yourcompany.com{2}/a> or using the information below.{1}{2}/b>{1}{1}Your Company{1}Address{1}Address 2{1}Phone{1}Fax (Fax){1}{1}Thank you for your order.{1}{1}{2}b>Please click the button below to configure the Tracker.Net user that will be taking the training.{2}/b>" />
```

11. **Message\_ConfigureNewTrackerUser\_MustEnterSelectOrganization.** This message is displayed on the *configurenewtrackeruser.aspx* page if the user has not selected or entered an organization. Whether existing organizations are displayed to the user depends on the *DisplayExistingOrganizationsToNewUsers* setting. Whether users can add their own organization is controlled by the *AllowNewUsersToAddOrganization* setting. This page reached from the *configuretrackeruser.aspx* page which is in turn reached from the checkout screen if *AddTrackerNetUserName* is True or *AddCourseOrClassAssignment* is True. The message is included here so that you can edit or localize the message.

```
<add  
key="Message_ConfigureNewTrackerUser_MustEnterSelectOrganization  
" value="You must either enter or select an organization  
(depending on store options) in order to proceed."/>
```

12. **Message\_ConfigureNewTrackerUser\_PasswordsMustMatch.** This message is displayed on the *configurenewtrackeruser.aspx* page if the password and verification password entries do not match. This page reached from the *configuretrackeruser.aspx* page which is in turn reached from the checkout screen if *AddTrackerNetUserName* is True or *AddCourseOrClassAssignment* is True. The message is included here so that you can edit or localize the message.

```
<add key="Message_ConfigureNewTrackerUser_PasswordsMustMatch"  
value="Your password entries do not match."/>
```

13. **Message\_ConfigureNewTrackerUser\_StudentAddedSuccessfully.** This message is displayed on the *configurenewtrackeruser.aspx* page if the user is added successfully. This page reached from the *configuretrackeruser.aspx* page which is in turn reached from the checkout screen if *AddTrackerNetUserName* is True or *AddCourseOrClassAssignment* is True. The message is included here so that you can edit or localize the message.

```
<add  
key="Message_ConfigureNewTrackerUser_StudentAddedSuccessfully"  
value="This student has been successfully added to  
Tracker.Net."/>
```

14. **Message\_ConfigureNewTrackerUser\_UserNameAlreadyExists.** This message is displayed on the *configurenewtrackeruser.aspx* page if the username entered is already present in the system. This page reached from the *configuretrackeruser.aspx* page which is in turn reached from the checkout screen if *AddTrackerNetUserName* is True or *AddCourseOrClassAssignment* is True. The message is included here so that you can edit or localize the message.

```
<add key="Message_ConfigureNewTrackerUser_UserNameAlreadyExists"  
value="This username already exists. Please try another one."/>
```

15. **Message\_ConfigureTrackerUser\_EnterUserNameAndPassword.** This message is displayed on the *configuretrackeruser.aspx* page if the user does not enter a username and/or password. This page is in turn reached from the checkout screen if *AddTrackerNetUserName* is True or *AddCourseOrClassAssignment* is True. The message is included here so that you can edit or localize the message.

```
<add key="Message_ConfigureTrackerUser_EnterUserNameAndPassword"  
value="You must enter a username and password to verify your  
user status."/>
```

16. **Message\_ConfigureTrackerUser\_InactiveStudent.** This message is displayed on the *configuretrackeruser.aspx* page if the user is inactive. This page is in turn reached from the checkout screen if *AddTrackerNetUserName* is True or *AddCourseOrClassAssignment* is True. The message is included here so that you can edit or localize the message.

```
<add key="Message_ConfigureTrackerUser_InactiveStudent"
value="This student is currently set to inactive. The system
administrator will need to make the student active before you
will be able to take courses."/>
```

17. **Message\_ConfigureTrackerUser\_InvalidUserNameAndPassword.** This message is displayed on the *configuretrackeruser.aspx* page if the user does not enter a valid username and password. This page is in turn reached from the checkout screen if *AddTrackerNetUserName* is True or *AddCourseOrClassAssignment* is True. The message is included here so that you can edit or localize the message.

```
<add
key="Message_ConfigureTrackerUser_InvalidUserNameAndPassword"
value="Invalid Tracker.Net username and password."/>
```

18. **Message\_ConfigureTrackerUser\_LoginSuccessful.** This message is displayed on the *configuretrackeruser.aspx* page if the user logs in successfully. This page is in turn reached from the checkout screen if *AddTrackerNetUserName* is True or *AddCourseOrClassAssignment* is True. The message is included here so that you can edit or localize the message.

```
<add key="Message_ConfigureTrackerUser_LoginSuccessful"
value="This student has been validated in the system."/>
```

19. **Message\_ConfigureTrackerUser\_TerminatedStudent.** This message is displayed on the *configuretrackeruser.aspx* page if the user is past his or her termination date. This in turn can only happen if *ExtendTerminationDate* is set to False, since otherwise the termination date is extended by the amount of *ExtendTerminationDateInDays*. This page is in turn reached from the checkout screen if *AddTrackerNetUserName* is True or *AddCourseOrClassAssignment* is True. The message is included here so that you can edit or localize the message.

```
<add key="Message_ConfigureTrackerUser_TerminatedStudent"
value="This student's access is currently expired. The system
administrator will need to extend the access date before taking
any courses."/>
```

20. **Message\_ConfigureTrackerUser\_UndeterminedError.** This message is displayed on the *configuretrackeruser.aspx* page if there is an undetermined error. This page is in turn reached from the checkout screen if *AddTrackerNetUserName* is True or



*AddCourseOrClassAssignment* is True. The message is included here so that you can edit or localize the message.

```
<add key="Message_ConfigureTrackerUser_UndeterminedError" value="There has been an undetermined error in configuring this student. Please contact technical support."/>
```

21. **Message\_Login\_Failed.** This message is displayed to if their login failed. It is included here so that you can edit or localize the message.

```
<add key="Message_Login_Failed" value="Login Failed!" />
```

22. **Message\_OrderDetails\_NotFound.** This message is displayed to users if the store errors out and cannot find any order details. It is included here so that you can edit or localize the message.

```
<add key="Message_OrderDetails_NotFound" value="Order not found!" />
```

23. **Message\_OrderList\_NoItems.** This message is displayed to users who try to request order details but they have not placed previous orders. It is included here so that you can edit or localize the message.

```
<add key="Message_OrderList_NoItems" value="You have no orders to display." />
```

24. **Message\_Register\_Failed.** This message is displayed to users who try to register with an email address that is already used. It is included here so that you can edit or localize the message.

```
<add key="Message_Register_Failed" value="Registration failed: That email address is already registered."/>
```

25. **Message\_SearchResults\_NoItems.** This message is displayed to users whose search returns no matches. It is included here so that you can edit or localize the message.

```
<add key="Message_SearchResults_NoItems" value="No items matched your query."/>
```

26. **Message\_ShoppingCart\_Error.** This message is displayed to users if there is an undetermined error with their shopping cart. It is included here so that you can edit or localize the message.

```
<add key="Message_ShoppingCart_Error" value="There has been a problem with one or more of your inputs."/>
```

27. **Message\_ShoppingCart\_NoCheckout.** This message is displayed to users who try to check out without having any items in their cart. It is included here so that you can edit or localize the message.

```
<add key="Message_ShoppingCart_NoCheckout" value="You can't proceed to the Check Out page with an empty cart."/>
```

28. **Message\_ShoppingCart\_NoItems.** This message is displayed to users who attempt to check out without any items in their shopping cart. It is included here so that you can edit or localize the message.

```
<add key="Message_ShoppingCart_NoItems" value="There are currently no items in your shopping cart. You can begin shopping by clicking on the categories to the left."/>
```

29. **Message\_ViewOrders\_Error.** This message is displayed to users who go to *vieworders.aspx* and enter an incorrect username and/or password. It is included here so that you can edit or localize the message.

```
<add key="Message_ViewOrders_Error" value="Incorrect value. This is a private page. Please exit immediately."/>
```

30. **NotificationEmailAddress.** This is the email address(es) to which order notification emails are sent. Separate multiple emails by a comma. This setting is only relevant if *SendEmailNotificationOfOrder* is True.

```
<add key="NotificationEmailAddress" value="jrhodes@plattecanyon.com" />
```

31. **NotificationEmailMessage.** This is the body of the notification email message. There are placeholders for variable pieces of information as follows.

Placeholder	Value
{0}	Carriage Return Line Feed (e.g., a hard return)
{1}	CustomerID. This is the numeric database ID of the new customer.
{2}	Payment Instructions as entered on the order form.
{3}	Comments as entered on the order form.
{4}	The order total.

This setting is only relevant if *SendEmailNotificationOfOrder* is True.

```
<add key="NotificationEmailMessage" value="Dear Sales Administrator,{0}{0}A Tracker.Net Store order has been placed. Here are the details:{0}{0}CustomerID: {1}. {0}Payment Instructions: {2}. {0}Comments: {3}. {0}Order Amount: {4}. {0}{0}To view the order, please go to
```

```
http://www.tbcon.com/TrackerStore/vieworders.aspx.{0}{0}Sincerely,  
{0}{0}The Tracker.Net Store" />
```

32. **NotificationEmailReplyAddress.** This is the reply address of the notification email. This setting is only relevant if *SendEmailNotificationOfOrder* is True.

```
<add key="NotificationEmailReplyAddress"  
value="store@plattecanyon.com" />
```

33. **NotificationEmailSubject.** This is the subject line of the notification email. This setting is only relevant if *SendEmailNotificationOfOrder* is True.

```
<add key="NotificationEmailSubject" value="Tracker.Net Store  
Order" />
```

34. **PasswordKey.** This setting must also match the one in the web.config file of your *Tracker* directory. It is used to properly encrypt passwords if the *AddTrackerNetUserName* setting is True.

```
<add key="PasswordKey" value="xyz" />
```

35. **PasswordEmailMessage.** This is the body of the password email message. This feature is only available if *UseVersion4PasswordEncryption* is False, as the version 4 encryption mechanism does not allow the decryption of passwords. There are placeholders for variable pieces of information as follows.

Placeholder	Value
{0}	Carriage Return Line Feed (e.g., a hard return)
{1}	Email address/user name
{2}	Password

```
<add key="PasswordEmailMessage" value="Thank you for visiting  
the Tracker.Net store.{0}{0}As a reminder, here is your login  
information.{0}{0}Email/user name: {1}{0}Password:  
{2}{0}{0}Sincerely,{0}{0}The Tracker.Net Store"/>
```

36. **PasswordEmailSubject.** This is the subject line of the password email. This setting is only relevant if *UseVersion4PasswordEncryption* is False.

```
<add key="PasswordEmailSubject" value="Tracker.Net Store Login  
Information"/>
```

37. **PasswordEmailSuccessMessage.** This is the message displayed after the user's password has been successfully emailed. This setting is only relevant if *UseVersion4PasswordEncryption* is False.

```
<add key="PasswordEmailSuccessMessage" value="Your password has been emailed to you."/>
```

38. **PasswordEmailUnsuccessfulMessage.** This is the message displayed if the user's email address cannot be located. This setting is only relevant if *UseVersion4PasswordEncryption* is False.

```
<add key="PasswordEmailUnsuccessfulMessage" value="We were unable to locate this email address."/>
```

1. **SendEmailNotificationOfOrder.** Set this to True to get an email whenever there is a store order. This is recommended. You can also check orders online by going to the *vieworders.aspx* page and entering the appropriate username and password.

```
<add key="SendEmailNotificationOfOrder" value="True" />
```

2. **SmtpServer.** This is the Simple Mail Transfer Protocol (SMTP) server for both the notification and password emails. This will be specific to your web server. On many servers, using (localhost), localhost, or (local) will work as well. This setting is only relevant if *SendEmailNotificationOfOrder* is True and/or *UseVersion4PasswordEncryption* is False.

```
<add key="SmtpServer" value="mail.yourserver.com" />
```

3. **TrackerLanguageNumber.** This value controls the language to be displayed on the *configuretrackeruser.aspx* and related pages. This number corresponds to the languages configured in Tracker.Net.

```
<add key="TrackerLanguageNumber" value="0"/>
```

4. **UseVersion4PasswordEncryption.** Set this to False to use the newer encryption mechanism that allows decryption of passwords. However, if you are moving from version 4 and have existing customers that you want to keep in your database, then set this value to True. The store will then automatically remove the ability for users to be emailed their passwords.

```
<add key="UseVersion4PasswordEncryption" value="False"/>
```

5. **ViewOrdersPassword.** This is the password to enter to view online by going to the *vieworders.aspx*.

```
<add key="ViewOrdersPassword" value="pdq" />
```

6. **ViewOrdersUserName.** This is the username to enter to view online by going to the *vieworders.aspx*.

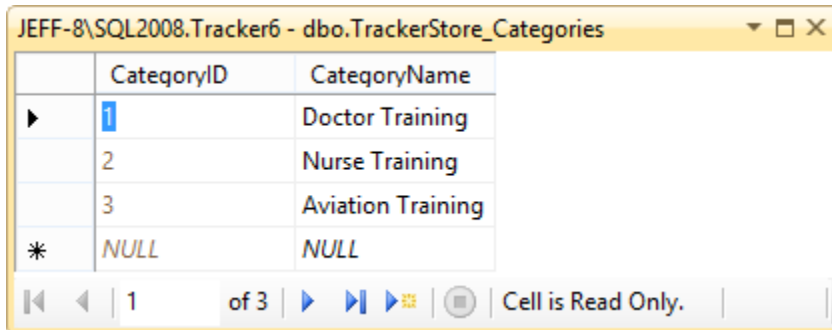
```
<add key="ViewOrdersUserName" value="xyz" />
```

## Adding Courses and Classes

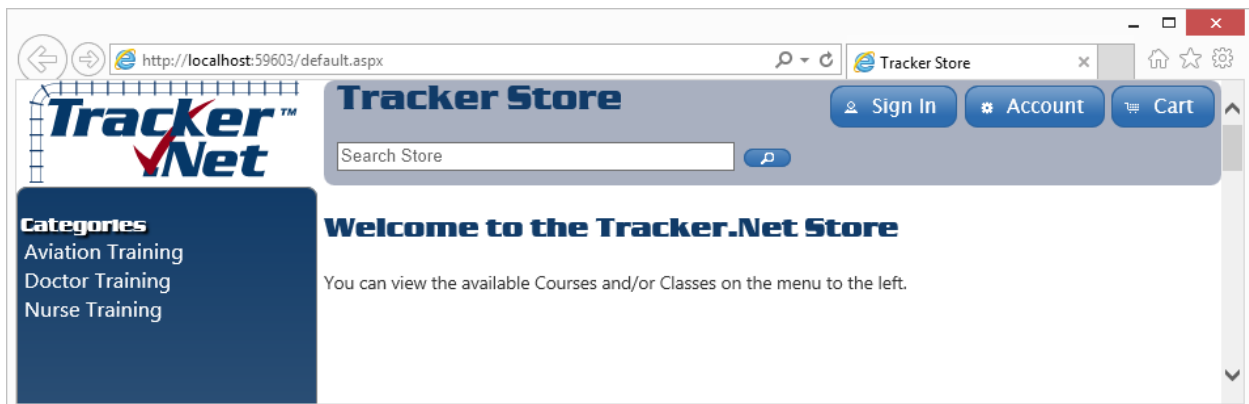
You use a tool like *Enterprise Manager* (SQL Server 2000) or *Management Studio* (SQL Server 2005, 2008, and 2012) to add information to appropriate store tables. All tables and associated stored procedures were added to your Tracker.Net database as part of its installation or upgrade. Each user-configurable table is described below.

### *TrackerStore\_Categories*

Use the table to configure the categories that show up on the left side of the store as shown below. The database will assign the *CategoryID*; you just enter the *CategoryName*. Keep track of the *CategoryID* as you need that in *Tracker\_Products* screen.



	CategoryID	CategoryName
▶	1	Doctor Training
	2	Nurse Training
	3	Aviation Training
*	NULL	NULL



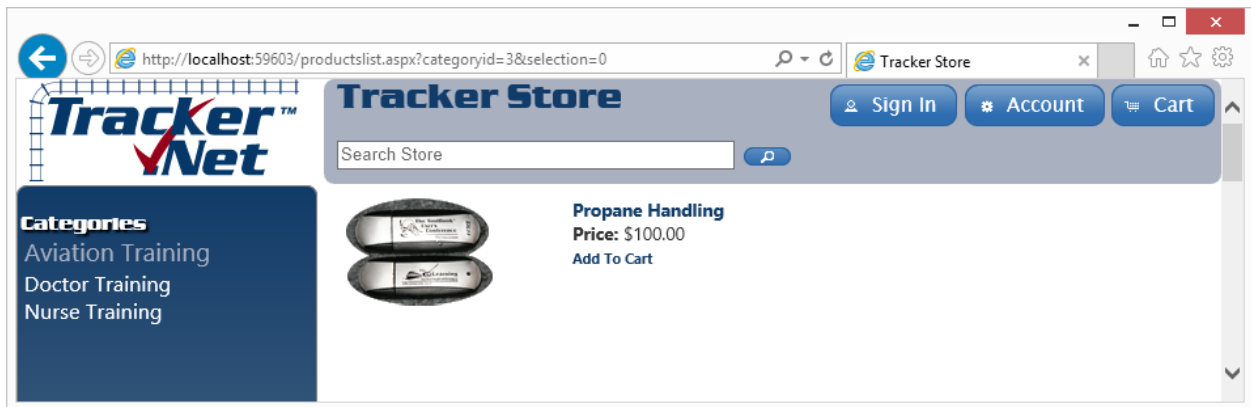
### *TrackerStore\_Products*

This table is where you enter the products to be displayed in the store. The *ProductID* is assigned by the database. You first enter the *CategoryID*, which has to match one of the values in the *TrackerStore\_Categories* table. You then enter either the *CourseID* from the *Tracker\_Courses* table **OR** the *ClassID* from the *Tracker\_Classes* table. If you use classes, then all the courses assigned to that class are then available to the student. *ModelNumber* can be anything you want, perhaps matching up to an identifier in your accounting system. *ProductImage* is the name of a file in the \ProductImages directory as explained earlier in this document. A smaller “thumbnail” file of the same name needs to be located in the \ProductImages\thumbs directory. The *UnitCost* is the price of the item displayed in the store.

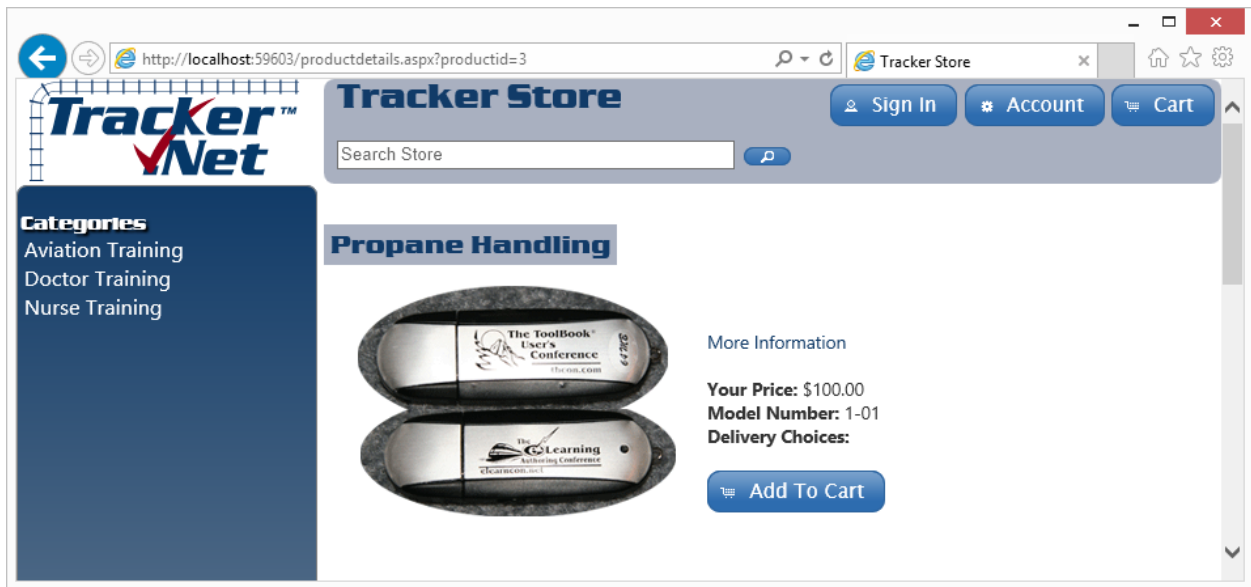
# Tracker Store Documentation

	ProductID	CategoryID	CourseID	ClassID	ModelNumber	ProductImage	UnitCost
▶	1	1	2	NULL	Item 1	bookcover1.jpg	55.0000
	2	2	NULL	1	Item 2	toolbookcomp...	55.0000
	3	3	3	NULL	1-01	2006usbkey.gif	100.0000
*	NULL	NULL	NULL	NULL	NULL	NULL	NULL

The screen capture below shows all the classes and courses in the “Aviation Training” category (in this case just one course). The image displayed is the thumbnail. The unit cost is displayed as well.

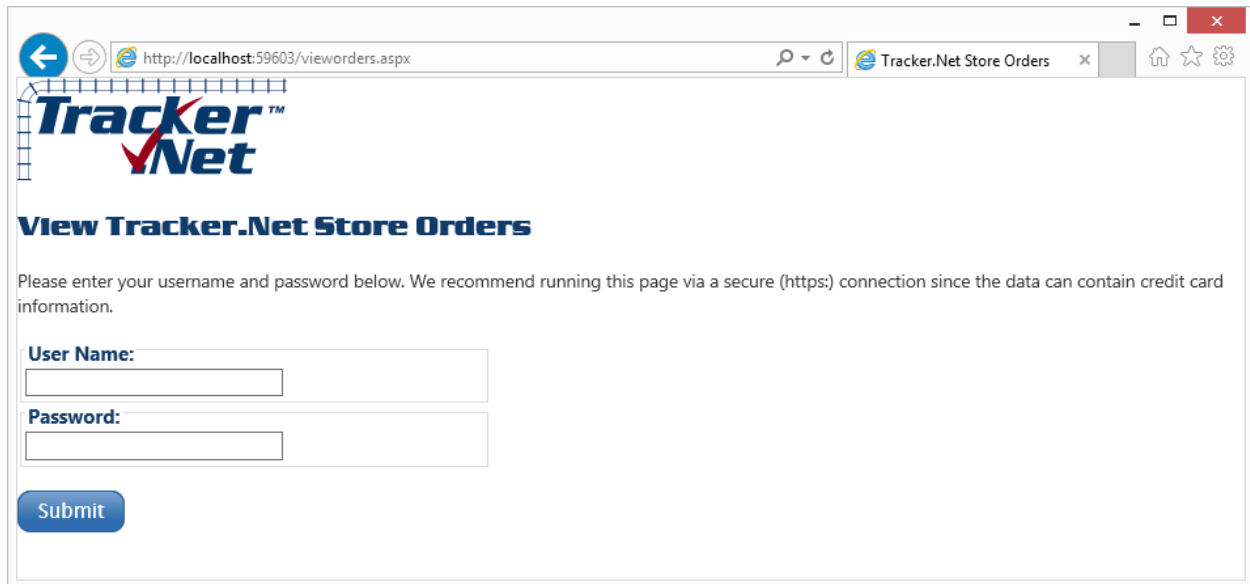


Clicking on the “Propane Handling” course displays the details (and the bigger “Product Image” graphic):



## Viewing Orders

Go to the *vieworders.aspx* screen to see a list of orders.



The screenshot shows a web browser window with the URL `http://localhost:59603/vieworders.aspx`. The page features the Tracker.Net logo at the top left. Below the logo, the heading "View Tracker.Net Store Orders" is displayed. A message reads: "Please enter your username and password below. We recommend running this page via a secure (https:) connection since the data can contain credit card information." There are two input fields: "User Name:" and "Password:". A blue "Submit" button is located below the password field.

You may want to clear out the *TrackerStore\_Orders*, *TrackerStore\_OrderDetails*, and *TrackerStore\_ShoppingCart* tables periodically to avoid viewing older database and to reduce the size of your database.